



Remember that vegetation does not have to be untidy or overgrown to encroach onto the highways. Neat, well-trimmed hedges can sometimes be a problem, in that year on year they increase in width until it becomes necessary to cut back into bare stems to redress the situation. Most plants quickly regenerate and resume their former appearance, but conifers are an exception to the rule, so it is vital that they are never allowed to get out of hand in the first place. Also check that the face of your hedge is vertical. It may seem to be within your boundary at the base, but if it leans outwards, it could be halfway over the footway at shoulder height.



If trees or shrubs overhang the highway, adequate pruning should be carried out to ensure that the work is lasting and that new growth is sound. This often means cutting well back behind your boundary to allow for re-growth. With trees, adequate headroom also needs to be considered and for clearance purposes the foliage from overhanging branches should not obstruct pedestrians, cyclists or vehicles, including buses and lorries.

If you have now decided that some work to your trees, shrubs or hedges is necessary, there are a few points you need to bear in mind.



***Vegetation clearance undertaken adjacent to the highway can expose you or your contractor to safety hazards of moving traffic and static utilities' equipment.***



***There may be environmental aspects that require consideration, for example timing of work so as not to disturb nesting birds and cavities in trees for roosting bats. In some areas trees are protected with tree preservation orders and may be located in conservation areas***



***If you are not competent in these matters, take advice and plan the work carefully and don't forget to clear up afterwards. Cuttings may be composted or disposed of in the recycling service provided by your District Council, or taken to your local household waste recycling centre provided by Lancashire County Council***

*This leaflet has been left for your information by:*

*Telephone Number:*

# VEGETATION NUISANCE

**This leaflet has been produced to promote awareness of the problems which can be caused by allowing vegetation to grow over garden boundaries and encroach over the highway.**

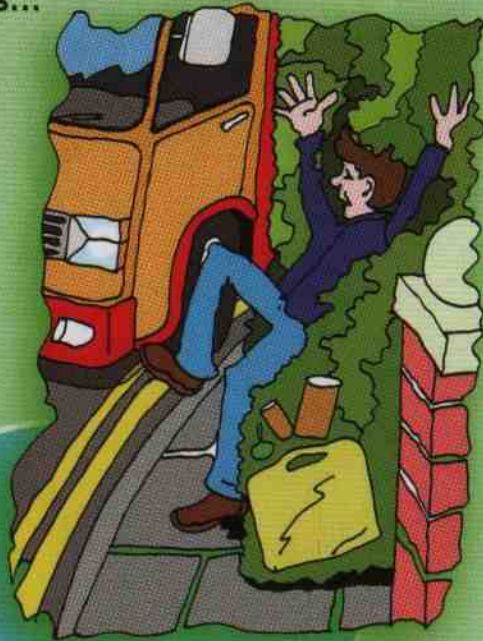
Lancashire  
County Council

For a fuller explanation of any of these points, please telephone the contact number inserted in the box overleaf.

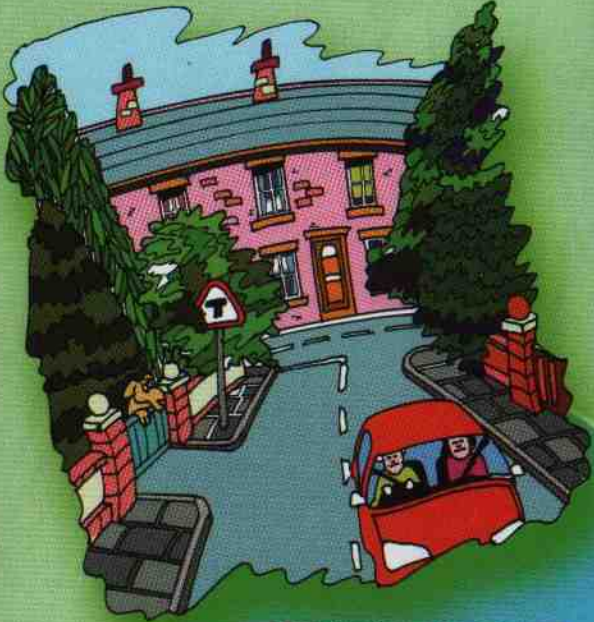
For general enquiries or reports about highway matters, please telephone **0845 0530011** or for internet enquiries log on to **[www.lancashirehighways.gov.uk](http://www.lancashirehighways.gov.uk)**

Please check that none of the following situations are causing difficulties for highway users and exposing them to unnecessary hazards...

1

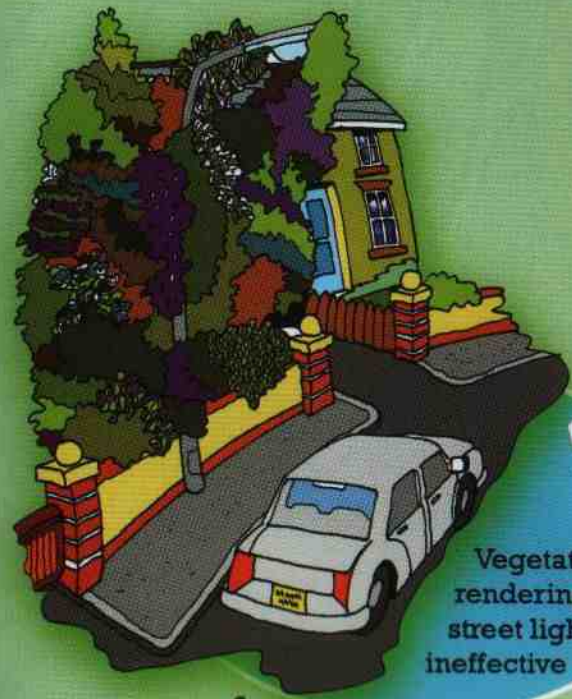


Vegetation obstructing the footway or roadway



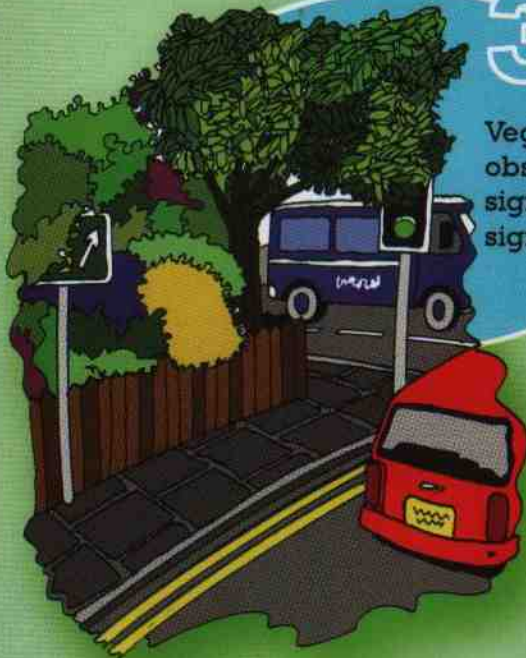
Vegetation obscuring sightlines

2



Vegetation rendering street lights ineffective

4



Vegetation obscuring signs and signals

3

5

Vegetation preventing access to highway and utilities equipment

